

# A PARENT TUTORIAL » UNDERSTANDING 2015 PSAT/NMSQT® RESULTS

## A Case Study: Ima B. Student's PSAT/NMSQT® Score Report

Take a look at Ima B. Student's sample score report below and on the next page. Use the corresponding information to help you interpret your student's PSAT/NMSQT Score Report.

### What Are Ima's Scores?

Ima's Evidence-Based Reading and Writing score is 380 and Math is 480. In Evidence-Based Reading and Writing, Ima's score is approaching the benchmark (explained on the report), but she is not quite on track for college readiness. In Math, however, Ima is exceeding the benchmark and is on track. Test scores, cross-test scores, and subscores can give Ima a better understanding of areas to work on.

### What Are Her Score Percentiles?

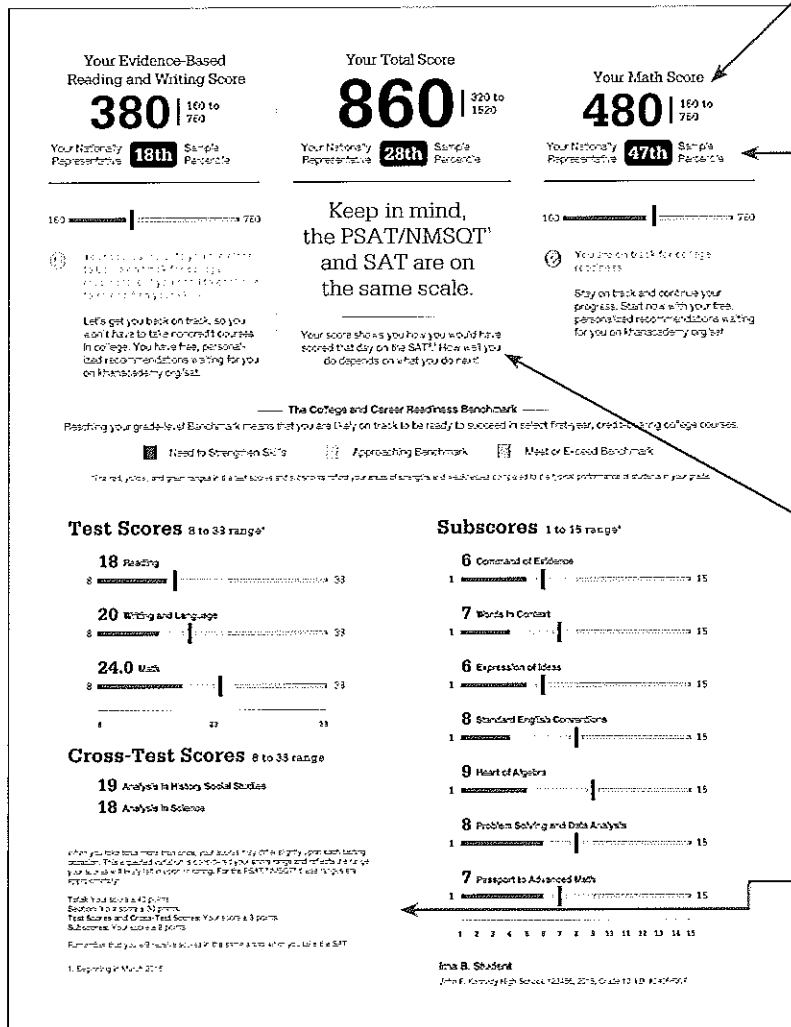
Since Ima is in the 10th grade, the percentiles compare her scores with those of all 10th-graders in the nation. Ima scored as well as or better in Evidence-Based Reading and Writing than 18 percent of a nationally representative group of sophomores. In Math, she scored as well as or better than 47 percent of a nationally representative group of sophomores. Additional percentiles are available in Ima's online score report.

### How Will Ima Do on the SAT®?

The PSAT/NMSQT® and SAT are scored on a common scale; therefore if Ima had taken the SAT instead of the PSAT/NMSQT on the same test date, she would have received the same score. When Ima takes the SAT, she will likely have had additional learning from school and practice. Her PSAT/NMSQT results can help Ima focus her efforts in high school to be better prepared for the SAT.

### What Are Her Score Ranges?

No test measures precisely what someone knows, and many factors can affect results. That is why test makers think of each score as a range that extends from a few points below to a few points above the score earned.



Score Report

## National Merit Scholarship Corporation

National Merit Scholarship Corporation (NMSC) administers the National Merit Scholarship Program, an academic competition for recognition and college scholarships. Its college scholarships are available to students who score in the top 1% on the PSAT/NMSQT. Selection Index scores of 124 or higher are eligible for the program. For more information, please visit [www.nationalmerit.org](http://www.nationalmerit.org).

If any of your responses to a "Entry Requirement" indicate that you do not meet the entry requirements, you will be notified by email. You may also contact your program entry email for more information.

National Merit Scholarship Corporation  
Attn: Scholarship Administration  
1400 Sherman Avenue, Suite 200  
Evanston, IL 60201-4001

Include your name and home address along with your high school name, address, and a valid email address.

### Your NMSC Selection Index

# 124\*

NMSC uses a Selection Index based on PSAT/NMSQT scores as a first step in identifying students to qualify for the program. To calculate your Selection Index, double the sum of your Reading, Writing and Language, and Math Test scores.

#### Eligibility Information

You do not have a Selection Index because you took a Reading, Writing and Language, and/or Math Test score.

The asterisk (\*) means you do not meet entry requirements for the 2015 National Merit Scholarship Program. See your report for more information on how to improve your score.

NOTE: Students taking high school and scoring college in 2015 to meet the PSAT/NMSQT again in early 3-year duration of grades 11-12 to enter the National Merit Scholarship Program.

### Entry Requirements

(Information you provided on your answer sheet)

High school course: YES

Year to complete high school and attend college: 2014

Years to be spent in grades 11-12: 4

U.S. Citizenship: All but one is a U.S. born/janitor and student for whom applied for permanent residence, the application for which has not been denied and intended to become a U.S. citizen at the earliest opportunity allowed by law.

## Will Ima Be Able to Enter the National Merit® Scholarship Program?

Ima has an NMSC Selection Index of 124, which is double the sum of her Reading (18), Writing and Language (20), and Math (24) Test scores. This index is used by National Merit Scholarship Corporation to designate students to be recognized in its National Merit Scholarship Program. Since an asterisk appears next to Ima's score, it means she does not meet entry requirements for the program. However, even if Ima met entry requirements, her score is not likely to take her further in the competition for awards. For entry requirements and information on how the competition works, see the *2015 Official Student Guide to the PSAT/NMSQT* or visit [www.nationalmerit.org](http://www.nationalmerit.org).

## How Can Ima Improve Her Academic Skills?

**Your Scores: Next Steps** are based on her test scores, and what general skills similarly performing students understand. Ima can see which skills she performed well on and which she needs to improve. When she goes online and logs in to the full report online, she can see additional skills and improvement steps. Ima can also link her account to Khan Academy® for personalized practice recommendations.

### Your Scores: Next Steps

Your score indicates that you are already **Ready** to:

- Revise text as needed to improve the coherence and content appropriateness of word choices with a somewhat challenging text
- Revise or add information or ideas to a piece of a text to support claims or points in a somewhat challenging text
- Revise or add information or ideas to ensure that information is presented in the most logical order

#### Reading Test

# 18

8 to 22

Improve your skills by focusing on your ability to:

- Revise or add information or ideas to a piece of a text to support claims or points in a challenging text
- Use a variety of sentence structures to accomplish a specific purpose such as persuading an audience
- Revise text as needed to improve the coherence and content appropriateness of word choices with challenging texts

#### Writing and Language Test

- Draw measurable conclusions from a somewhat challenging text
- Describe the overall structure of a somewhat challenging text
- Identify claims and counterclaims explicitly stated in a somewhat challenging passage

# 20

8 to 33

Draw a reasonable inference and logical conclusions from challenging texts

- Analyze information presented in such forms as graphics, tables, and charts and note that information is presented in a somewhat challenging text
- Determine how the selection of specific words shapes meaning and tone in a challenging passage

#### Math Test

# 24.0

8 to 33

- Interpret a linear equation in one variable with constant coefficients that represents a context. Select the equation of a line of best fit and interpret the slope and intercept of the line in the context of the situation (when a linear model is appropriate)
- Interpret sample statistics understanding and using margin of error
- Solve and interpret a quadratic function or equation that represents a context and requires multiple steps
- Calculate and interpret frequency distributions using tables and other representational methods

Determine how a graph may be affected by a change to its equation

- Determine the value of a constant or coefficient for an equation with no solution or infinitely many solutions
- Using a speed of motion, make a prediction and compare the predicted values with the actual values in the data set
- With a context, compare the center of two separate data sets with different spreads
- Determine whether two events are independent given their probabilities

### Get more next steps online

[studentscores.collegeboard.org](http://studentscores.collegeboard.org)



Connect to FREE, world-class SAT practice online on [khanacademy.org](http://khanacademy.org)



AP® and Course Work  
See which AP courses may be good matches for you



Register for the SAT  
Select an SAT test date and register for it now

### Score Report

## What Are the Next Steps for Ima?

Under *Get more next steps online*, Ima is directed to [studentscores.collegeboard.org](http://studentscores.collegeboard.org) to learn how to prepare for the SAT and see her potential for challenging AP® course work.

## When Should Ima Take the SAT?

As a sophomore, Ima should begin planning when she will take the SAT. Most students take the SAT for the first time in their junior year. By planning now, Ima can ensure she has adequate time to practice for the SAT. She can take advantage of practice resources by visiting [studentscores.collegeboard.org](http://studentscores.collegeboard.org).

## How Can Ima Learn from Her Answers?

The score report is designed to be used with the student's PSAT/NMSQT test booklet. It lists all of Ima's answers and allows her to see the correct answer and difficulty level for each question. Ima can use her online score report to review the questions she answered incorrectly or omitted, and see detailed answer explanations explaining why her responses were correct or incorrect.

### Your Question-Level Feedback

Writing and Language    Math Test – Calculator    Math Test – No Calculator

Question #	Correct	Your Answer	Difficulty	Subscore	Question ID
1	A	***	EOL SEC	30	1
2	B	***	EOL SEC	30	2
3	A	***	EOL SEC	30	3
4	C	***	EOL SEC	30	4
5	D	***	EOL SEC	30	5
6	B	***	EOL SEC	30	6
7	C	***	EOL SEC	30	7
8	C	***	EOL SEC	30	8
9	B	***	EOL SEC	30	9
10	B	***	EOL SEC	30	10
11	A	***	EOL SEC	30	11
12	A	***	EOL SEC	30	12
13	D	***	EOL SEC	30	13
14	D	***	EOL SEC	30	14
15	A	***	EOL SEC	30	15
16	D	***	EOL SEC	30	16
17	A	***	EOL SEC	30	17
18	D	***	EOL SEC	30	18
19	D	***	EOL SEC	30	19
20	B	***	EOL SEC	30	20
21	A	***	EOL SEC	30	21
22	B	***	EOL SEC	30	22
23	A	***	EOL SEC	30	23
24	A	***	EOL SEC	30	24
25	C	***	EOL SEC	30	25
26	D	***	EOL SEC	30	26
27	C	***	EOL SEC	30	27
28	C	***	EOL SEC	30	28
29	A	***	EOL SEC	30	29
30	B	***	EOL SEC	30	30
31	B	***	EOL SEC	30	31
32	A	***	EOL SEC	30	32
33	D	***	EOL SEC	30	33
34	C	***	EOL SEC	30	34
35	D	***	EOL SEC	30	35
36	A	***	EOL SEC	30	36
37	B	***	EOL SEC	30	37
38	A	***	EOL SEC	30	38
39	D	***	EOL SEC	30	39
40	B	***	EOL SEC	30	40
41	D	***	EOL SEC	30	41
42	C	***	EOL SEC	30	42
43	A	***	EOL SEC	30	43
44	B	***	EOL SEC	30	44
45	D	***	EOL SEC	30	45
46	C	***	EOL SEC	30	46
47	D	***	EOL SEC	30	47

### Score Report